



Philadelphia PA  
Pottstown  
1/2 MILE

Road Equipment  
Parts Center  
NEXT RIGHT

# TANK TRAILER

**ROAD EQUIPMENT PARTS CENTER**

**9**  
EDITION  
CATALOG





## **HINTON TRANSPORTATION INVESTMENTS**

*[www.hintoninvestments.com](http://www.hintoninvestments.com)*

Copyright © 2023 Hinton Transportation Investments, Inc.

FleetCraft® is a registered trademark of Jomar Qsub, Inc.

All rights reserved.

No part of this catalog may be reproduced or used in any manner without the prior written permission of the copyright owner.

This catalog does not replace the advice of an Original Equipment Manufacturer (OEM). Please consult your OEM representative for application specific inquiries.





# ROAD EQUIPMENT PARTS CENTER

<b>Couplers &amp; Piping</b> . . . . .	<b>5</b>	<b>Hose</b> . . . . .	<b>23</b>
<b>Cam &amp; Groove Adapters</b> . . . . .	<b>6</b>	Banding . . . . .	24
Adapters . . . . .	6	Doors . . . . .	25
Jump Size Type DA . . . . .	6	Drop Hose . . . . .	24
Type A . . . . .	7	Food Grade . . . . .	24
Type AA . . . . .	7	Hose Tubes . . . . .	25
Type C . . . . .	7	Punch Lock Style Band Clamps . . . . .	26
Type F . . . . .	7	Suction . . . . .	24
<b>Cam Locks</b> . . . . .	<b>8</b>	Tools . . . . .	26
Handles . . . . .	8	Vapor Hoses . . . . .	25
Locking Cam Arm Straps . . . . .	8	<b>Ladders</b> . . . . .	<b>29</b>
Type B . . . . .	8	Channels . . . . .	30
Type D . . . . .	8	Full Ladders . . . . .	30
Type DD . . . . .	8	Rungs . . . . .	30
Type DP . . . . .	9	<b>Lighting</b> . . . . .	<b>33</b>
Type E . . . . .	9	Light Boxes . . . . .	34
<b>Clamp — Seals</b> . . . . .	<b>6</b>	Light Brackets . . . . .	35
<b>Dust Caps</b> . . . . .	<b>9</b>	<b>Manholes</b> . . . . .	<b>37</b>
Type DC . . . . .	9	Attachments . . . . .	38
<b>Fittings</b> . . . . .	<b>12</b>	Manlid Gaskets . . . . .	38
90 Degree Elbow Fittings . . . . .	12	Manlids . . . . .	39
Ball Valves . . . . .	12	Sanitary Vents . . . . .	38
Blank TTMA Flanges . . . . .	12	<b>Pumps &amp; Valves</b> . . . . .	<b>41</b>
Couplers . . . . .	12	Butterfly Valves . . . . .	42
Weld Flanges . . . . .	13	Controls . . . . .	44
Piping . . . . .	13	Brake Interlocks . . . . .	44
Pipe Nipples . . . . .	13	Pressure Relief Vents . . . . .	45
Air King Fittings . . . . .	14	Pressure Vacuum Relief Vents . . . . .	45
<b>Fuel Nozzles</b> . . . . .	<b>14</b>	Gauges . . . . .	45
<b>Gaskets</b> . . . . .	<b>10</b>	Discharge Valves . . . . .	43
Cam & Groove Fuel Gaskets . . . . .	10	Fusible and Frangible Plugs . . . . .	44
Cam & Groove Gaskets . . . . .	10	Hydraulic Fittings & Connections . . . . .	44
Discharge Pumps . . . . .	11	Hydraulic Jack Pumps . . . . .	44
Discharge Valves . . . . .	11	Hydraulic Tank Breathers . . . . .	44
<b>Sight Glasses</b> . . . . .	<b>14</b>	Operators . . . . .	42
<b>TTMA Flange Gaskets</b> . . . . .	<b>11</b>	<b>Tank &amp; Shell</b> . . . . .	<b>47</b>
Sump — Flange Gaskets . . . . .	11	Brackets . . . . .	48
<b>Unloading</b> . . . . .	<b>9</b>	Tank — Shell — Panels . . . . .	48
API Drop Adapters . . . . .	9	<b>Upper Couplers</b> . . . . .	<b>51</b>
<b>Vapor Recovery</b> . . . . .	<b>10</b>	Heavy Duty — 3/8" Plate . . . . .	52
<b>Fenders &amp; Bumpers</b> . . . . .	<b>17</b>	Revolver Replacement Parts . . . . .	52
Aluminum Fenders . . . . .	18	Standard — 5/16" Plate . . . . .	52
Bumpers . . . . .	19	<b>Index</b> . . . . .	<b>54</b>
Fender Brackets . . . . .	19		
Stainless Steel Fenders . . . . .	18		





# ROAD EQUIPMENT PARTS CENTER

---

## Couplers & Piping

## Clamp — Seals

### Clamps — Seals



Part No.	Description	Material
DIXDBV-VB200	2" VICTAULIC GROOVE CLAMP	Aluminum
DIXDBV-VB300	3" VICTAULIC GROOVE CLAMP	Aluminum
DIXDBV-VB400	4" VICTAULIC GROOVE CLAMP	Aluminum
DIXDL275	2.75" HOSE CLAMP	Galvanized Steel
DIXDL32	2" HOSE CLAMP	Galvanized Steel
DIXG200BL	2" VICTAULIC CLAMP SEAL	Baylast
DIXG200VB	2" VICTAULIC CLAMP SEAL	FKM-B
DIXG300BL	3" VICTAULIC CLAMP SEAL	Baylast
DIXG300VB	3" VICTAULIC CLAMP SEAL	FKM-B
DIXG400BL	4" VICTAULIC CLAMP SEAL	Baylast
DIXG400N	4" VICTAULIC CLAMP SEAL	Buna-N
DIXG400VB	4" VICTAULIC CLAMP SEAL	FKM-B
PELVC651S	4" REPLACEMENT GASKET QUICK RELEASE CLAMP	White Buna-N
PELVCACSPGSKWN04	4" REPLACEMENT GASKET FOR GRV X GRV CLAMP	White Food Grade
PELVCALA04GXPW	4" CLAMP GROOVE TO PIPE	Aluminum

## Cam & Groove Adapters

### Adapters



Cam x TTMA Flange — 316 Stainless Steel		
Part No.	Size	Pressure Rating
DIX300-ALT-SS	Adapter: 3", Flange: 3"	250 PSI
DIX400-ALT-SS	Adapter: 4", Flange: 4"	250 PSI



Cam x TTMA Flange — 356T6 Aluminum		
Part No.	Size	Pressure Rating
DIX300-ALT-AL	Adapter: 3", Flange: 3"	125 PSI
DIX400-ALT-AL	Adapter: 4", Flange: 4"	125 PSI
DIX600-ALT-AL	Adapter: 6", Flange: 6"	100 PSI

### Jump Size Type DA



Adapter Reducer — 316 Stainless Steel		
Part No.	Size	Pressure Rating
DIX3020-DA-SS	Coupler: 3", Adapter: 2"	250 PSI
DIX4030-DA-SS	Coupler: 4", Adapter: 3"	250 PSI



Adapter Reducer — 356T6 Aluminum		
Part No.	Size	Pressure Rating
DIX3020-DA-AL	Coupler: 3", Adapter: 2"	250 PSI
DIX4030-DA-AL	Coupler: 4", Adapter: 3"	250 PSI





# ROAD EQUIPMENT PARTS CENTER

## Type A

Couplers & Piping

Male Cam x Female NPT — 316 Stainless Steel		
Part No.	Size	Pressure Rating
DIX125-A-SS	1.25" x 1.25"	250 PSI
DIX150-A-SS	1.5" x 1.5"	250 PSI
DIX200-A-SS	2" x 2"	150 PSI
DIX300-A-SS	3" x 3"	150 PSI
DIX400-A-SS	4" x 4"	125 PSI



Male Cam x Female NPT — 356T6 Aluminum		
Part No.	Size	Pressure Rating
DIX100-A-AL	1" x 1"	125 PSI
DIX125-A-AL	1.25" x 1.25"	100 PSI
DIX150-A-AL	1.5" x 1.5"	100 PSI
DIX200-A-AL	2" x 2"	75 PSI
DIX250-A-AL	2.5" x 2.5"	250 PSI
DIX300-A-AL	3" x 3"	150 PSI
DIX400-A-AL	4" x 4"	250 PSI
DIX600-A-AL	6" x 6"	250 PSI



## Type AA

Spool Adapter — 316 Stainless Steel		
Part No.	Size	Pressure Rating
DIX200-AA-SS	2" x 2"	125 PSI
DIX300-AA-SS	3" x 3"	125 PSI



Spool Adapter — 356T6 Aluminum		
Part No.	Size	Pressure Rating
DIX150-AA-AL	1.5" x 1.5"	100 PSI
DIX200-AA-AL	2" x 2"	100 PSI
DIX300-AA-AL	3" x 3"	75 PSI
DIX400-AA-AL	4" x 4"	100 PSI



## Type C

Hose Shank x Female Cam — 316 Stainless Steel		
Part No.	Size	Pressure Rating
DIX100-C-SS	1" x 1"	125 PSI
DIX125-C-SS	1.25" x 1.25"	100 PSI
DIX150-C-SS	1.5" x 1.5"	100 PSI
DIX200-C-SS	2" x 2"	150 PSI
DIX250-C-SS	2.5" x 2.5"	125 PSI, 150 PSI with King Crimp Ferrule System
DIX300-C-SS	3" x 3"	125 PSI
DIX400-C-SS	4" x 4"	100 PSI



Hose Shank x Female Cam — 356T6 Aluminum		
Part No.	Size	Pressure Rating
DIX100-C-AL	1" x 1"	125 PSI
DIX125-C-AL	1.25" x 1.25"	100 PSI, 150 PSI with King Crimp Ferrule System
DIX150-C-AL	1.5" x 1.5"	250 PSI
DIX200-C-AL	2" x 2"	150 PSI
DIX250-C-AL	2.5" x 2.5"	125 PSI
DIX300-C-AL	3" x 3"	250 PSI
DIX400-C-AL	4" x 4"	250 PSI



## Type F

Male Cam x Male NPT — 316 Stainless Steel		
Part No.	Size	Pressure Rating
DIX125-F-SS	1.25" x 1.25"	250 PSI
DIX150-F-SS	1.5" x 1.5"	250 PSI
DIX200-F-SS	2" x 2"	250 PSI
DIX250-F-SS	2.5" x 2.5"	150 PSI
DIX300-F-SS	3" x 3"	125 PSI
DIX400-F-SS	4" x 4"	125 PSI



Male Cam x Male NPT — 356T6 Aluminum		
Part No.	Size	Pressure Rating
DIX100-F-AL	1" x 1"	100 PSI
DIX125-F-AL	1.25" x 1.25"	250 PSI
DIX150-F-AL	1.5" x 1.5"	100 PSI
DIX200-F-AL	2" x 2"	75 PSI
DIX250-F-AL	2.5" x 2.5"	125 PSI
DIX300-F-AL	3" x 3"	125 PSI
DIX400-F-AL	4" x 4"	100 PSI
DIX600-F-AL	6" x 6"	100 PSI



# ROAD EQUIPMENT PARTS CENTER



Couplers & Piping

## Cam Locks

### Handles



Part No.	Description	Material
DIX300-HRP-SP	FITS 3-5" CAM ARM	316 Sintered Stainless Steel
DIX300-HRP-BR	FITS 3-5" CAM ARM	Brass
EBW77411603	FITS 3-5" CAM ARM W/ RING	Brass

### Locking Cam Arm Straps



Part No.	Description	Material
DIXCVS18	18" VELCRO CAM ARM LOCK STRAP	Nylon
DIXCVS24	24" VELCRO CAM ARM LOCK STRAP	Nylon
PELHS15X22	1.5" X 22" VELCRO HOSE STRAP	Nylon

### Type B



#### Female Cam x Male NPT — 356T6 Aluminum

Part No.	Size	Pressure Rating	Part No.	Size	Pressure Rating
DIX100-B-AL	1" x 1"	250 PSI	DIX250-B-AL	2.5" x 2.5"	250 PSI
DIX125-B-AL	1.25" x 1.25"	250 PSI	DIX300-B-AL	3" x 3"	150 PSI
DIX150-B-AL	1.5" x 1.5"	250 PSI	DIX400-B-AL	4" x 4"	250 PSI
DIX200-B-AL	2" x 2"	250 PSI			

### Type D



#### Female Cam x Female NPT — 356T6 Aluminum

Part No.	Size	Pressure Rating	Part No.	Size	Pressure Rating
DIX100-D-AL	1" x 1"	125 PSI, 150 PSI with King Crimp Ferrule System	DIX200-D-AL	2" x 2"	250 PSI
DIX125-D-AL	1.25" x 1.25"	125 PSI, 150 PSI with King Crimp Ferrule System	DIX250-D-AL	2.5" x 2.5"	250 PSI
DIX150-D-AL	1.5" x 1.5"	100 PSI, 150 PSI with King Crimp Ferrule System	DIX300-D-AL	3" x 3"	125 PSI
			DIX400-D-AL	4" x 4"	100 PSI
			DIX600-D-AL	6" x 6"	75 PSI

### Type DD



#### Female x Female Coupler — 316 Stainless Steel

Part No.	Size	Pressure Rating
DIX200-DD-SS	2" x 2"	125 PSI
DIX300-DD-SS	3" x 3"	75 PSI
DIX400-DD-SS	4" x 4"	250 PSI



#### Female x Female Coupler — 356T6 Aluminum

Part No.	Size	Pressure Rating
DIX200-DD-AL	2" x 2"	250 PSI
DIX300-DD-AL	3" x 3"	100 PSI
DIX400-DD-AL	4" x 4"	250 PSI



# ROAD EQUIPMENT PARTS CENTER

## Type DP

Dust Plug — 316 Stainless Steel	
Part No.	Size
DIX125-DP-SS	1.250"
DIX150-DP-SS	1.500"
DIX200-DP-SS	2.000"
DIX250-DP-SS	2.500"
DIX300-DP-SS	3.000"



Dust Plug — 356T6 Aluminum	
Part No.	Size
DIX125-DP-AL	1.250"
DIX150-DP-AL	1.500"
DIX200-DP-AL	2.000"
DIX250-DP-AL	2.500"
DIX300-DP-AL	3.000"
DIX400-DP-AL	4.000"



Couplers & Piping

## Type E

Male Cam x Hose Shank — 316 Stainless Steel		
Part No.	Size	Pressure Rating
DIX125-E-SS	1.5" x 1.5"	250 PSI
DIX150-E-SS	2" x 2"	250 PSI
DIX200-E-SS	3" x 3"	--
DIX300-E-SS	4" x 4"	125 PSI



Male Cam x Hose Shank — 356T6 Aluminum		
Part No.	Size	Pressure Rating
DIX100-E-AL	1" x 1"	250 PSI
DIX125-E-AL	1.25" x 1.25"	250 PSI
DIX150-E-AL	1.5" x 1.5"	250 PSI
DIX200-E-AL	2" x 2"	250 PSI
DIX300-E-AL	3" x 3"	125 PSI
DIX400-E-AL	4" x 4"	100 PSI



## Dust Caps

## Type DC

Dust Cap — 316 Stainless Steel	
Part No.	Size
DIX200-DC-SS	2.000"
DIX300-DC-SS	3.000"
DIX400-DC-SS	4.000"



Dust Cap — 356T6 Aluminum	
Part No.	Size
DIX200-DC-AL	2.000"
DIX300-DC-AL	3.000"
DIX400-DC-AL	4.000"
DIX600-DC-AL	6.000"



## Unloading

## API Drop Adapters

Part No.	Description	Material
DIX31440-225AL	3" API MALE DROP ADAPTER	Aluminum
DIX41440-225AL	4" API MALE DROP ADAPTER	Aluminum
DIX4540F	4" API FEMALE DROP ADAPTER	Aluminum
EBW88040301	4" API DUST CAP	Aluminum
EBW88041001	3" API MALE DROP ADAPTER	Aluminum
EBW88041101	4" API MALE DROP ADAPTER	Aluminum
EBW88020601	EBW API DUST CAP GASKET	Buna-N
EMC560611	API DUST CAP GASKET	Buna-N



# ROAD EQUIPMENT PARTS CENTER



Couplers & Piping

## Vapor Recovery

### Vapor Recovery



Part No.	Description	Material
DIXVR4100FNG	4" TTMA FLANGE MOUNT X 4" MALE CAM W/ POPPET - NO SIGHT GLASS	Aluminum
EBW30130001	3" FEMALE NPT X 4" MALE CAM VAPOR VALVE W/ POPPET	Aluminum
EBW30130002	4" FEMALE NPT X 4" MALE CAM VAPOR VALVE W/ POPPET	Aluminum
EBW30420007	VAPOR RECOVERY CAP W/ CHAIN	Nylon
GIRGU00000	3" HYDROLIC OPERATED VAPOR VENT ONE 2" NPT PORT	Stainless Steel
GIRGU00010	3" AIR ACTUATED VAPOR VENT SWIVEL BASE 2" NPT PORT W/ INDICATOR PIN	Stainless Steel
GIRGU02000	3" HYDROLIC OPERATED VAPOR VENT SWIVEL DUAL NPT PORTS	Stainless Steel

## Gaskets

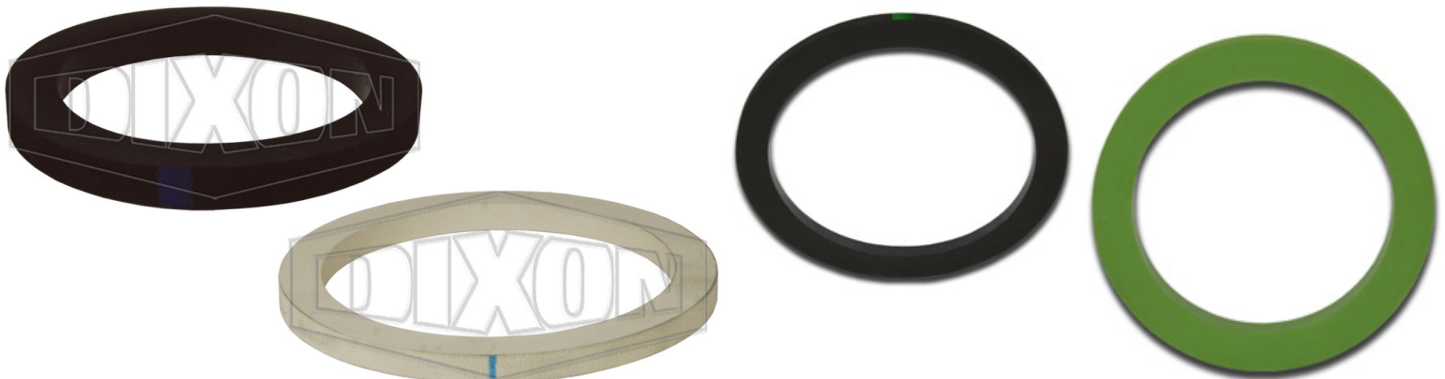
### Cam & Groove Fuel Gaskets



Part No.	Description	Material
DIX200-G-BF	2" GASKET FOR FUEL USE	Buna-N
DIX300-G-BF	3" GASKET FOR FUEL USE	Buna-N
DIX400-G-BF	4" GASKET FOR FUEL USE	Buna-N

### Cam & Groove Gaskets

Part No.	Description	Material	Part No.	Description	Material
DIX100-G-BU	1" BLACK CAM GASKET	Buna-N	DIX400-G-WB	4" WHITE CAM GASKET	Buna-N
DIX125-G-BU	1.25" BLACK CAM GASKET	Buna-N	PELCCGG100B	1" CAM GASKET	Buna-N
DIX150-G-BU	1.50" BLACK CAM GASKET	Buna-N	PELCCGG150B	1.5" CAM GASKET	Buna-N
DIX200-G-BU	2" BLACK CAM GASKET	Buna-N	PELCCGG200B	2" CAM GASKET	Buna-N
DIX250-G-BU	2.5" BLACK CAM GASKET	Buna-N	PELCCGG250B	2.5" CAM GASKET	Buna-N
DIX300-G-BU	3" BLACK CAM GASKET	Buna-N	PELCCGG300B	3" CAM GASKET	Buna-N
DIX400-G-BU	4" BLACK CAM GASKET	Buna-N	PELCCGG400B	4" CAM GASKET	Buna-N
DIX500-G-BU	5" BLACK CAM GASKET	Buna-N	PELCCGG500B	5.0" CAM GASKET	Buna-N
DIX600-G-BU	6" BLACK CAM GASKET	Buna-N	PELCCGG600B	6" CAM GASKET	Buna-N
DIX800-G-BU	8" BLACK CAM GASKET	Buna-N	PELCCGG125V	1.25" CAM GASKET	FKM
DIX200-G-WB	2" WHITE CAM GASKET	Buna-N	PELCCGG200VGR	2" CAM GASKET	FKM - Green
DIX300-G-WB	3" WHITE CAM GASKET	Buna-N	PELCCGG300V	3" CAM GASKET	FKM





# ROAD EQUIPMENT PARTS CENTER

## Discharge Pumps

Part No.	Description	Material
PELTT2007.038R	2-3" ROPER PUMP PACKING SET	Graphite/PTFE
PELTT2019.038R9	2-3" ROPER PUMP PACKING	Braided PTFE
PELTTN43156	4" ROPER PUMP PACKING SET	Black Graphite



## Discharge Valves

Part No.	Description	Material
EMC408061	O-RING SEAT F500 SERIES VALVE POPPET	FKM
EMC615992	SEAT DISC FOR F7000 VALVE POPPET	FKM
EMC619522	SEAT FITS F7000 VALVE POPPET	Buna-N
GIRGH50240	TOP HAT GASKET FOR QRB BONNET TO BODY	Teflon Envelope
GIRGM30030	DURASEAL GASKET ORANGE SWIVEL BASE	Teflon
GIRGQ86020	REPLACEMENT SEAT	Teflon
PELTT15202TF	3" MAIN SEAL .500"	Teflon/PTFE
PELTT15227NT	QUICK REMOVABLE BONNET PACKINGS SOLD AS EACH	Acrylic/PTFE

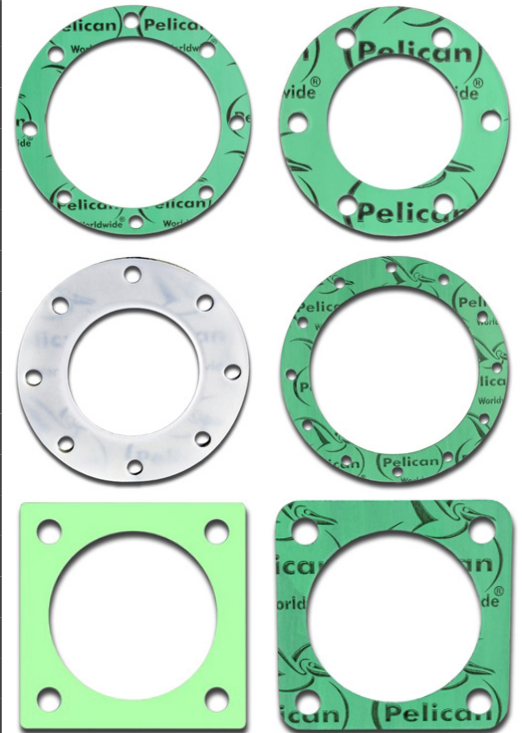


Couplers & Piping

## TTMA Flange Gaskets

## Sump — Flange Gaskets

Part No.	Description	Material
PELTTSGA201NA	2" TTMA SQUARE FLANGE GASKET	Non-Asbestos
PELTTSGA301NA	3" TTMA SQUARE FLANGE GASKET	Non-Asbestos
PELTTSGA401NA	4" TTMA SQUARE FLANGE GASKET	Non-Asbestos
PELTTG15266NA	4" TTMA SUMP GASKET	Non-Asbestos
PELRGA401NA	4" TTMA FLANGE GASKET	Non-Asbestos
PELTRGA201NA	2" TTMA FLANGE GASKET	Non-Asbestos
PELTRGA301NA	3" TTMA FLANGE GASKET	Non-Asbestos
PELTRGA601NA	6" TTMA FLANGE GASKET	Non-Asbestos
PELTTG15181NA	3" TTMA SUMP GASKET	Non-Asbestos
PELTTG15266NA	4" TTMA SUMP GASKET	Non-Asbestos
PELTTG25507NA	6" TTMA SUMP GASKET	Non-Asbestos
PELTTG15266TFNA	4" TTMA SUMP GASKET	PTFE Envelope
PELTRGA301TFNA	3" TTMA FLANGE GASKET	PTFE Envelope
PELTRGA301TFNAML	3" TTMA FLANGE GASKET	PTFE Envelope
PELTRGA401TFNA	4" TTMA FLANGE GASKET	PTFE Envelope
PELTRGA401TFNAML	4" TTMA FLANGE GASKET	PTFE Envelope
PELTRGA602TFNAML	6" TTMA FLANGE GASKET	PTFE Envelope



## Fittings

### 90 Degree Elbow Fittings



#### Female NPT x Female NPT — 316L Stainless Steel

Part No.	Size
PELPF-SS-TE-90-038-FXF	.375"
PELPF-SS-TE-90-050-FXF	.500"
PELPF-SS-TE-90-075-FXF	.750"
PELPF-SS-TE-90-1.0-FXF	1.000"
PELPF-SS-TE-90-1.50-FXF	1.500"
PELPF-SS-TE-90-200-FXF	2.000"

### Ball Valves



#### Standard Port NPT — Stainless Steel

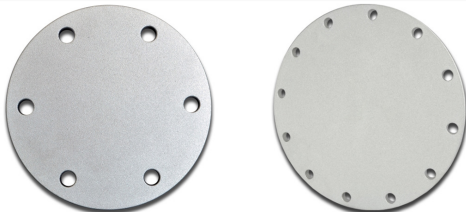
Part No.	Size
PELBVS-SP-NPT-050	.500"
PELBVS-SP-NPT-1.0	1.000"
PELBVS-SP-NPT-125	1.250"
PELBVS-SP-NPT-150	1.500"
PELBVS-SP-NPT-200	2.000"



#### Full Port NPT — Stainless Steel

Part No.	Size
PELBVS-FP-NPT-038	.375"
PELBVS-FP-NPT-050	.500"
PELBVS-FP-NPT-075	.750"
PELBVS-FP-NPT-100	1.000"
PELBVS-FP-NPT-125	1.250"
PELBVS-FP-NPT-150	1.500"
PELBVS-FP-NPT-200	2.000"
PELBVS-FP-NPT-300	3.000"

### Blank TTMA Flanges



Part No.	Description	Material
PELFL-TT-BL-AL-G15181	3" TTMA BLANK SUMP FLANGE	Aluminum
PELFL-TT-BL-AL-RGA301	3" TTMA BLANK FLANGE	Aluminum
PELFL-TT-BL-AL-RGA401	4" TTMA BLANK FLANGE	Aluminum
PELFL-TT-BL-AL-RGA601	6" TTMA BLANK FLANGE	Aluminum

### Couplers



#### Treaded NPT — 316L Stainless Steel

Part No.	Size
PELPF-SS-TPC-050	.500"
PELPF-SS-TPC-075	.750"
PELPF-SS-TPC-100	1.000"
PELPF-SS-TPC-125	1.250"
PELPF-SS-TPC-150	1.500"



#### Threaded NPT — 6061-T6 Aluminum

Part No.	Size
CHTWE2016	.375"
CHTWE2023	.500"
CHTWE2030	.750"
CHTWE2037	1.000"
CHTWE2051	1.500"
CHTWE2058	2.000"



# ROAD EQUIPMENT PARTS CENTER

## Weld Flanges

Part No.	Description	Material
EMCZ0009-001	THREAD SEALANT TEFLON MIX	Aluminum
DIXTTF3AL	3" TTMA WELD FLANGE	Aluminum
DIXTTF4AL	4" TTMA WELD FLANGE	Aluminum
FA038	.375" NPTF STAMPED	Aluminum
FA050	.5" NPTF STAMPED	Aluminum
FA075	.75" NPTF STAMPED	Aluminum
FA100	1" NPTF STAMPED	Aluminum
FA125	1.25" NPTF STAMPED	Aluminum
FA150	1.5" NPTF STAMPED	Aluminum
FA200	2" NPTF STAMPED	Aluminum
GIRGJ30000	3" THREADED FUSE CAP	Stainless Steel
GIRGJ36000	3" THREADED POLYMER FUSE CAP	Stainless Steel
GIRGJ40000	4" THREADED FUSE CAP	Stainless Steel
GIRGK30000	3" THREADED CAP	Stainless Steel
PELPFSSTPN200600	2" X 6" PIPE NIPPLE	Stainless Steel
PELPFSSTPN300600	3" X 6" PIPE NIPPLE	Stainless Steel



Couplers & Piping

## Piping

Part No.	Description	Material
CHTFE0053	3" X 20' SCH 10 PIPE	304L Stainless Steel
CHTFE0067	4" X 20' SCH 10 PIPE	304L Stainless Steel
CHTFJ0035	3" X 20' SCH 10 PIPE	316L Stainless Steel
CHTFJ0049	4" X 20' SCH 10 PIPE	316L Stainless Steel
CHTIK0078	2" X 20' SCH 40 PIPE	6061-T6 Aluminum
CHTIK0079	2" X 20' SCH 10 PIPE	6061-T6 Aluminum
CHTZZ0660	3" X 20' SCH 10 PIPE	6061-T6 Aluminum
CHTIK0087	4" X 20' SCH 10 PIPE	6061-T6 Aluminum
CHTZZ7000	2.5" X 20' SCH 10 PIPE	6061-T6 Aluminum



## Pipe Nipples

Schedule 40 — 316L Stainless Steel	
Part No.	Size
PELPFSWN038NPT	.375"
PELPFSWN050NPT	.500"
PELPFSWN075NPT	.750"
PELPFSWN100NPT	1.000"
PELPFSWN125NPT	1.250"
PELPFSWN150NPT	1.500"
PELPFSWN200NPT	2.000"
PELPFSWN300NPT	3.000"



Close Nipple — 316L Stainless Steel	
Part No.	Size
PELPFSSTCN038	.375"
PELPFSSTCN050	.500"
PELPFSSTCN075	.750"
PELPFSSTCN100	1.000"
PELPFSSTCN150	1.500"
PELPFSSTCN200	2.000"
PELPFSSTCN300	3.000"



## Air King Fittings



Part No.	Description	Material
DIXAM7	.750" MALE NPT - DIXON	Zinc Plated
DIXAM8	.750" FEMALE NPT - DIXON	Zinc Plated
DIXGAMO	TWO LUG PLUG - DIXON	Zinc Plated
PELQCSSF075	.750" FEMALE NPT - PELICAN	Stainless Steel
PELQCSSME075	.750" MALE NPT - PELICAN	Stainless Steel
PELQCSSBE00	TWO LUG PLUG - PELICAN	Stainless Steel
PELQCGSKVIT	REPLACEMENT SEAL - PELICAN	FKM
PELQCGSKBR	REPLACEMENT SEAL - PELICAN	Buna-N

## Fuel Nozzles

### Fuel Nozzles



Part No.	Description
SCU05066	1.25" X 1.25" NOZZLE W/ SWIVEL
SCU05072	1.50" X 1.50" NOZZLE W/ SWIVEL
SCU05815	1.25" MALE NPT X FEMALE NPT REPLACEMENT SWIVEL
SCU05816	1.50" MALE NPT X FEMALE NPT REPLACEMENT SWIVEL
EBW41030003	1.25" FUEL NOZZLE W/O SPOUT
EBW41040103	1.50" FUEL NOZZLE W/O SPOUT
EBW41013301	1.25" X 1.38" X 8.50" BRASS SPOUT
EBW41011601	1.50" X 1.38" X 8.50" BRASS SPOUT
EBW41012901	1.50" X 1.62" X 8.50" BRASS SPOUT
EBW46510102	1.25" MALE NPT X 1.25" FEMALE NPT SWIVEL W/ CHECK VALVE

## Sight Glasses

### Sight Glasses



Part No.	Description	Material
JIKJDG-105	4" ID TTMA SIGHT GLASS 8 HOLES	Acrylic
JIKJDG-1053B	3.5" ID TTMA SIGHT GLASS 8 HOLES	Acrylic
Part No.	Description	
EMC619499	SIGHT GLASS KIT REPLACEMENT ASSEMBLY FOR EMCO F5002-41VALVE	







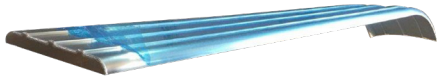


**ROAD EQUIPMENT**  
**PARTS CENTER**

---

**Fenders & Bumpers**

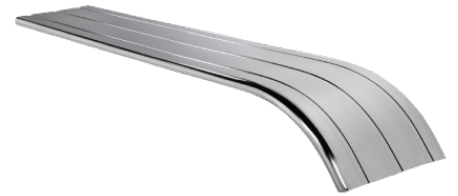
## Aluminum Fenders



**BRE-FEN0000761**  
140" FRONT CAPPED FENDER



**BRE-FEN0000766**  
FRONT FENDER END CAP



**NLNNF139A-1**  
139" FENDER, LONG RADIUS ON ONE END, 144" OVERALL,  
24" WIDE - RIB DOWN

## Aluminum Fenders



**NLNNF139ARU-1**  
139" FRONT FENDER, LONG RADIUS ON ONE END, 144"  
OVERALL, 25" WIDE - RIB UP



**NLNNF96ARU-1**  
96" REAR FENDER, LONG TANDEM, 108" OVERALL, 25"  
WIDE - RIB UP



**NLNNF99A-1**  
99" FENDER, LONG TANDEM, 108" OVERALL, 24" WIDE - RIB  
DOWN

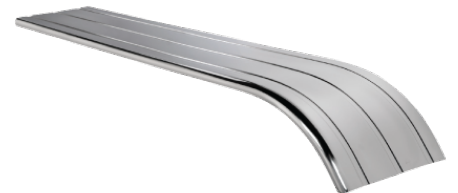
## Stainless Steel Fenders



**NLNNF96SSRU-1**  
96" FENDER, LONG TANDEM, 107" OVERALL, 25" WIDE - RIB  
UP



**NLNNF99SS-1**  
99" FENDER, LONG TANDEM, 108" OVERALL, 24" WIDE - RIB  
DOWN



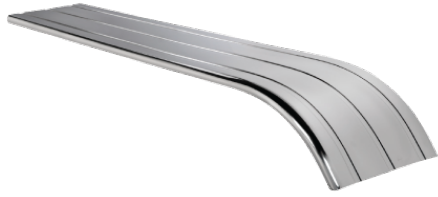
**NLNNF139SS-1**  
139" FRONT FENDER, RIB DOWN



# ROAD EQUIPMENT PARTS CENTER

Fenders & Bumpers

## Stainless Steel Fenders



### NLNNF139SSRU-1

139" FRONT FENDER, RIB UP



### NLNNF166SS-1

66" SINGLE AXLE FENDER, 66" OVERALL, 24" WIDE - RIB DOWN

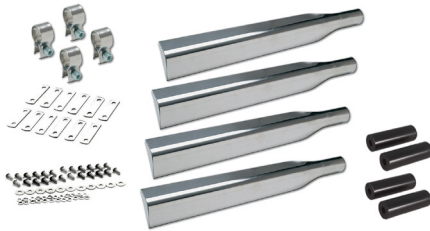


### NLNNF180SSNR-1

80" SINGLE AXLE PRO SERIES, 80" OVERALL, 24" WIDE - SMOOTH FINISH

## Stainless Steel Fenders

## Bumpers



### NLNNF21180SSMKHD

MOUNTING KIT FOR NLNNF180SSNR-1 FENDERS



### BRE-R-PT-A-5110

4" X 4" X 88" STAINLESS STEEL CAPPED BUMPER



### BRE-WLKEXT0070650

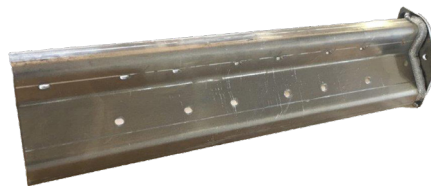
95.75" WABASH EXTRUDED ALUMINUM BUMPER

## Fender Brackets



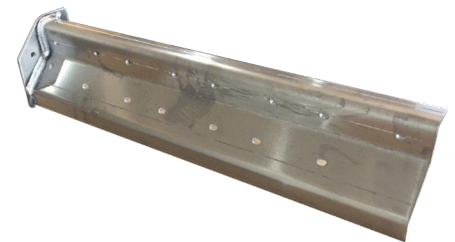
### BRE-A-BR-A-2443

1.5" X 24.63" STAINLESS STEEL PIPE BRACE WELDON FENDER



### BRE-FEN0001024

FENDER BRACE ROADSIDE ALUMINUM BOLT-ON FEN32408A



### BRE-FEN0001026

FENDER BRACE CURBSIDE ALUMINUM BOLT-ON FEN32409A

## Fender Brackets



**BRE-MDF000015**  
STAINLESS STEEL ANGLE MUDFLAP ASSEMBLY



**BRE-P-A-5877**  
BACKUP STRAP ALUMINUM MUDFLAP



**BRE-WLK-BPR0111**  
WABASH STAINLESS STEEL ROADSIDE BUMPER BRACE

## Fender Brackets



**BRE-WLK-BPR0112**  
WABASH STAINLESS STEEL CURBSIDE BUMPER BRACE

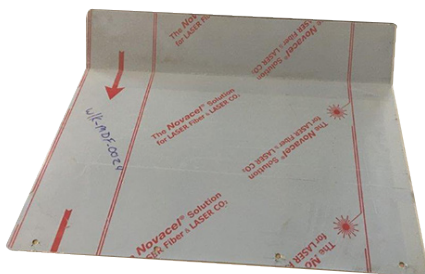


**BRE-WLK-FEN0025**  
ALUMINUM PIPE BRACE BOLT-ON FENDER W/ RISER



**BRE-WLK-FENA3054**  
ALUMINUM PIPE BRACE BOLT-ON FENDER NO RISER

## Fender Brackets



**BRE-WLK-MDF0023**  
4.75" X 5.25" STAINLESS STEEL SPLASH SHIELD



**BRE-WLK-MDF3239**  
.105" X 1.5" X 24" STAINLESS STEEL MUDFLAP  
BACKUPSTRAP









# ROAD EQUIPMENT PARTS CENTER

---

---

## Hose

# ROAD EQUIPMENT PARTS CENTER

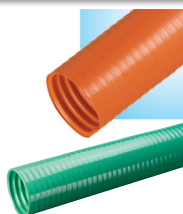


Hose

## Banding

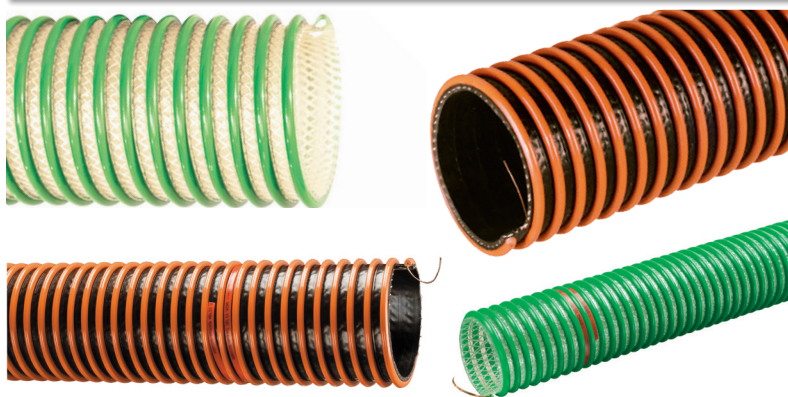


1FT Banding Coils — Non-Food Grade PVC			
Part No.	Color	ID	
KANBANDCOIL-2	White	2"	
KANBANDCOIL-3	White	3"	
KANBANDCOIL-4	White	4"	
KURBCRT2	Grey	2"	
KURBCRT3	Grey	3"	
KURBCRT4	Grey	4"	
KURBCYL2	Yellow	2.02"	



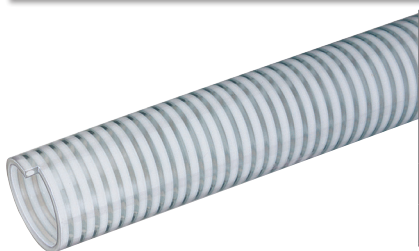
3FT Banding Sleeves — Non-Food Grade PVC			
Part No.	Color	ID	
KANBANDSLEEVE-3	Orange	3"	
KANBANDSLEEVE-4	Orange	4"	
KURSLV-DRP4X3	Green	4.04"	

## Drop Hose



100FT — Gravity Drop — Static Dissipative for Gasoline, Diesel, Ethanol, Biodiesel			
Part No.	Material	Color	ID
KANST120LT-2	Buna-N/PVC	Black/Orange	2"
KANST120LT-3	Buna-N/PVC	Black/Orange	3"
KANST120LT-4	Buna-N/PVC	Black/Orange	4"
KANST120UAPDH-4	Polyurethane	Clear/Green	4"
KURNDH404X100	NBR-PVC	Black/Orange	4.04"
KURTDH303X100	TPU	Clear/Green	3.03"
KURTDH404X100	TPU	Clear/Green	4.04"

## Food Grade



100FT Clear PVC — Low Temp Suction for Milk, Beer, Wine, Ice, Water			
Part No.	ID	OD	
KURMILK-LT200X100	2"	2.33"	
KURMILK-LT250X100	2.5"	2.87"	
KURMILK-LT300X100	3"	3.42"	

**Working Pressure** — 68F-28"hg/ 104F-25"hg  
**Series** — MILK-LT  
**Temp Range** — -40F/C to +150F/+65.5C  
**Compliance** — FDA (03) & 3-A (01) & applicable USDA Standards

## Suction



100FT Green EPDM — Straight for Liquid Fert, Irrigation, Liq Maure, Septic, Trash Pumps, Water						
Part No.	ID	OD	Series	Working Pressure	Temp Range	Static Dissipative
KURMILK-LT200X100	2"	2.51"	TG	68F-Full/ 104F-28"hg	-40F/C to +160F/+71C	No

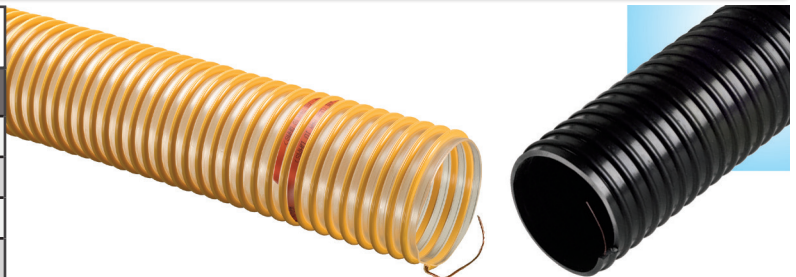


# ROAD EQUIPMENT PARTS CENTER

## Vapor Hoses

Hose

100FT Straight — Vapor Recovery — Static Dissipative for Gasoline, Diesel, Ethanol, Biodiesel Vapors			
Part No.	Material	Color	ID
KURTV202X100	TPU	Clear/Yellow	2.02"
KANST120UACVR-2	Polyurethane	Clear/Yellow	2"
KANST120UACVR-3	Polyurethane	Clear/Yellow	3"
KANST120VP-2	Buna-N/PVC	Black	2"



Part No.	Description	Material
DIXG3050	50' STRANDED STEEL STATIC GROUNDING REEL	Stranded Steel



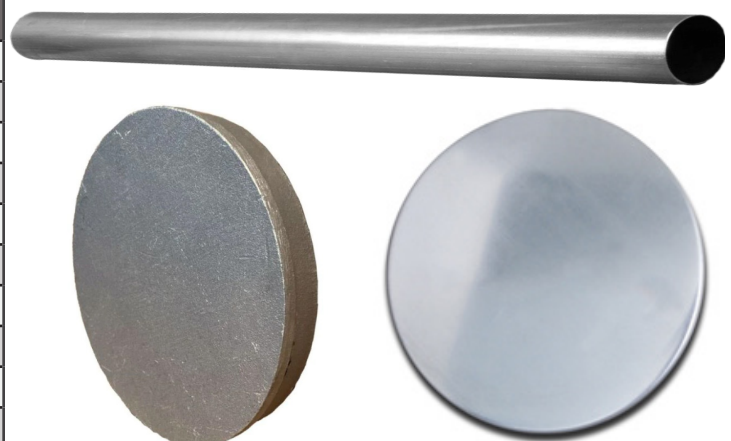
## Doors

Part No.	Description	Material
DIXTDF6	6" HOSE TUBE DOOR W/ LATCH	Aluminum
DIXTDF7	7" HOSE TUBE DOOR W/ LATCH	Aluminum
DIXTDF8	8" HOSE TUBE DOOR W/ LATCH	Aluminum
PELHTD-AL10	10" HOSE TUBE DOOR W/ LATCH	Aluminum
PELHTD-AL6	6" HOSE TUBE DOOR W/ LATCH	Aluminum
PELHTD-AL7	7" HOSE TUBE DOOR W/ LATCH	Aluminum
PELHTDAL8	8" HOSE TUBE DOOR W/LATCH	Aluminum
PELHTDD-AL8	8" DOUBLE DOOR W/ LATCH	Aluminum
PELHTDD-AL8-LP	8" DOUBLE DOOR W/ PIN	Aluminum
PELHTDLK8	DOOR LATCH REPLACEMENT KIT	Stainless Steel



## Hose Tubes

Part No.	Description	Material
KRS10X21X.051	10" X 21' X .051" HOSE TUBE	Aluminum
KRS6X21X.058	7" X 21' X .058" HOSE TUBE	Aluminum
KRS7X21X.060	7" X 21' X .060" HOSE TUBE	Aluminum
KRS8X21X.051	8" X 21' X .051" HOSE TUBE	Aluminum
KRSIT6	6" HOSE TUBE PLUG	Cast Aluminum
KRSIT7	7" HOSE TUBE PLUG	Cast Aluminum
PELHTEC-AL10	10" HOSE TUBE END CAP	Aluminum
PELHTEC-AL6	6" HOSE TUBE END CAP	Aluminum
PELHTEC-AL7	7" HOSE TUBE END CAP	Aluminum
PELHTECAL8	8" HOSE TUBE END CAP	Aluminum



# ROAD EQUIPMENT PARTS CENTER



## Punch Lock Style Band Clamps

Hose



Part No.	Size	Material
DIXK10	2.5"	Galvanized
DIXK12	3.0"	Galvanized
DIXK16	4.0"	Galvanized
DIXK20	5.0"	Galvanized
DIXKS10	2.5"	Stainless Steel
DIXKS12	3.0"	Stainless Steel
DIXKS16	4.0"	Stainless Steel
DIXKS20	5.0"	Stainless Steel

## Tools



Part No.	Description
DIXF1	BAND CLAMP TOOL FIT .375" - .625" CLAMPS
GIRGT60002	3" - 4" SPANNER WRENCH COMBO PIN LUG WRENCH







# ROAD EQUIPMENT PARTS CENTER

---

---

## Ladders

## Channels



**BRE-FAD101**

3" X 1.5" OD X 96" STAINLESS STEEL



**BRE-WLK-EXT70840C**

.313" X 2" X 4" X 92.5" ALUMINUM



**BRE-WLK-LAD4115**

3" X 24.9" 10GA STAINLESS STEEL BRACKET

## Full Ladders



**BRE-ALB2899**

WABASH UNIVERSAL STAINLESS STEEL LADDER



**BRE-ALC4175**

STAINLESS STEEL SAFETY STYLE LADDER ASSEMBLY



**BRE-LAD0000844**

105.69" WABASH STAINLESS STEEL 2-STEP, 7 RUNG LADDER

## Rungs



**BRE-LA2802**

1" STAINLESS STEEL DIMPLE CHANNEL



**BRE-LAD0000982**

1.25" STAINLESS STEEL DIMPLE CHANNEL



**BRE-WLK-LAD4229**

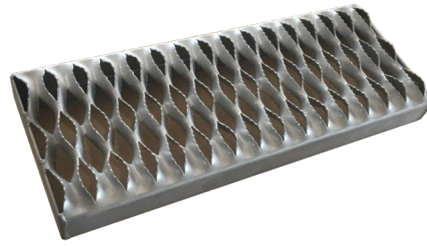
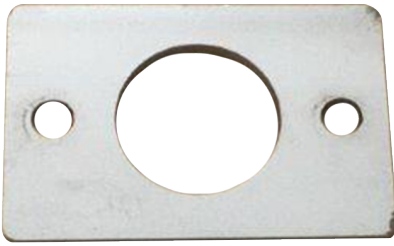
1.25" STAINLESS STEEL RUNG





# ROAD EQUIPMENT PARTS CENTER

## Rungs



### **BRE-WLK-LAD4235**

STAINLESS STEEL LADDER PAD RECTANGLE W/ 1.28" HOLE

### **BRE-WLK-LAD42488**

7" X 17.38" STAINLESS STEEL GRIPSTRUT LADDER STEP ASSEMBLY

### Notes:

---

---

---

---

---

---

---

---

---

---

---

---

---

---

---

---

---

---

---

---

---

---

---

---

Ladders



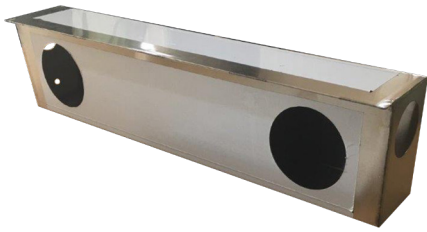


# ROAD EQUIPMENT PARTS CENTER

---

## Lighting

## Light Boxes



**BRE-BTI-LIGHTBOXR**  
2 HOLE LIGHT BOX STAINLESS STEEL BULK TANK CURBSIDE



**BRE-CHA839**  
WABASH LIGHT BOX STAINLESS STEEL MOUNTING BRACKET



**BRE-PLR-KM0564**  
POLAR 2 HOLE LIGHT BOX STAINLESS STEEL CURBSIDE

## Light Boxes



**BRE-PLR-KM0565**  
POLAR 2 HOLE LIGHT BOX STAINLESS STEEL ROADSIDE



**BRE-SD27011L**  
WABASH 2 HOLE LIGHT BOX STAINLESS STEEL ROADSIDE



**BRE-SD27011R**  
WABASH 2 HOLE LIGHT BOX STAINLESS STEEL CURBSIDE

## Light Boxes



**BRE-WLK-4113A**  
WABASH 2 HOLE LIGHT BOX STAINLESS STEEL TRI ROADSIDE/CURBSIDE



**NLNNL306SSNL-1RH**  
3 HOLE STAINLESS SPRING LOADED LIGHTBOX CURBSIDE



**NLNNL306SSNL-1LH**  
3 HOLE STAINLESS SPRING LOADED LIGHTBOX ROADSIDE



# ROAD EQUIPMENT PARTS CENTER

## Light Brackets

Lighting



**BRE-BR-A-7032**  
STAINLESS STEEL BOLT-ON LIGHT BRACKET OVAL MARKER



**BRE-BR-B-6783L**  
FRONT FENDER STAINLESS STEEL LIGHT BRACKET  
ROADSIDE



**BRE-BR-B-6783R**  
FRONT FENDER STAINLESS STEEL LIGHT BRACKET  
CURBSIDE

## Light Brackets



**BRE-WLK-LBX0031**  
ALUMINUM LIGHT BRACKET BOLT-ON OVAL MARKER



**BRE-WLK-LBX0056**  
ALUMINUM LIGHT BRACKET FRONT FENDER  
ROADSIDE/CURBSIDE

### Notes:

---



---



---



---



---



---



---



---



---



---





# **ROAD EQUIPMENT PARTS CENTER**

---

---

## **Manholes**

# ROAD EQUIPMENT PARTS CENTER



## Attachments



Part No.	Description
BRE-WLK-MWY0094	WABASH 3/4" STAINLESS STEEL MANLID DOGLATCH
BRE-WLKMWYA308302	WABASH .75-10 THREAD MANHOLE WINGNUT BRASS INSERT

## Sanitary Vents



Part No.	Description
BRE-SAF-390ELX300	3" STAINLESS STEEL SANITARY ELBOW W/ CAPTIVE NUT
HILT-20299	3 PIECE ANTI SURGE VENT ATTACHED TO OLSEN SANITARY VENT - SPRING LOADED
HILT-21642	4 PIECE OLSEN DOUBLE ACTING SANITARY TANK VENT
PELV333PBN10	3" SANITARY BEVEL GASKET
RUN600-0	3 PIECE PLASTIC VENT ASSEMBLY
RUN600-1	PLASTIC BOTTOM HOUSING
RUN600-2	PAGODA PLASTIC INTERNAL BREATHER
RUN600-3	BLUE PLASTIC SANITARY VENT CAP

## Manlid Gaskets



Part No.	Description
PELGP7500L0625PC	.625" BRAIDED WHITE ROPE GASKET
BET3119BN	10" BETTS BUNA-N FILL COVER GASKET FOR PAF 9000 AND PAF 406-98
PELMHG1123583W	HEIL WHITE OLD STYLE
PELMHG3395	20" KNAPPCO/PELICAN BLACK
PELMHG3513EPDM	20" BETTS BLACK EPDM
PELMHG3513SA	20" SANAPHRENE RUBBER
PELMHG3513WH	20" BETTS WHITE HYPALON
PELMHG3523	20" KNAPPCO/PELICAN WHITE BUNA-N
PELMHG3560BN	20" BETTS BLACK BUNA-N
PELMHG4383WN	20" BETTS WHITE BUNA-N
PELMHG9209WB	20" KNAPPCO/HEIL WHITE BUNA-N
PELMHGMWY0049BN	20" WABASH SANITARY LID GASKET BLACK BUNA-N
PELMHGMWY0049WB	20" WABASH SANITARY LID GASKET WHITE BUNA-N
PELMHGTKA8586	20" FRUEHAUF WHITE BUNA-N OLDER
PELMHGVKA5927	20" FRUEHAUF BULK TANK GASKET BLACK BUNA-N OLDER









# ROAD EQUIPMENT PARTS CENTER

---

## Pumps & Valves

# ROAD EQUIPMENT PARTS CENTER



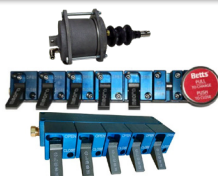
## Butterfly Valves

Pumps & Valves



Part No.	Description
DIXWD301ALVB	3" ALUMINUM BODY WET- DRY VALVE FKM-B RUBBER DISC
DIXWD306ALVB	3" ALUMINUM BODY WET - DRY VALVE METERING LEVER FKM-B RUBBER DISC
DIXWD401ALVB	4" ALUMINUM BODY WET - DRY VALVE FKM-B RUBBER DISC
DIXWD406ALVB	4" ALUMINUM BODY WET-DRY VALVE METERING LEVER FKM-B RUBBER DISC
DIXWD601ALV	6" ALUMINUM BODY WET-DRY VALVE MANUAL LEVER FKM-B RUBBER DISC
DIXWD606ALV	6" ALUMINUM BODY WET-DRY VALVE METERING LEVER FKM-B RUBBER DISC
PELVCAL04GXGW	4" ALUMINUM QUICK RELEASE CLAMP ASSEMBLY
PELVCALA04DBWNGXG	4" ALUMINUM CLAMP GROOVE X GROOVE VALVE
ULT02399722F65000	2" CAST IRON BUTTERFLY VALVE TEFLON SEAT W/ TEFLON DISC
ULT03399722F65000	3" CAST IRON BUTTERFLY VALVE TEFLON SEAT W/ TEFLON DISC
ULT04399722F65000	4" CAST IRON BUTTERFLY VALVE TEFLON SEAT W/ TEFLON DISC
ULT100086	AIR ACTUATOR - AIR OPEN/SPRING CLOSE 2" AND 3" VALVE ALUMINUM BODY
ULT100096	AIR ACTUATOR - AIR OPEN/SPRING CLOSE 4" VALVE ALUMINUM BODY
ULT10086T	AIR ACTUATOR - AIR OPEN/SPRING CLOSE PERPENDICULAR MOUNT
ULT300206465W	VALVE HANDLE FOR 3" - 6" 780 VALVES HANDLE ONLY
ULT3390828U501	3" ALUMINUM BODY BUTTERFLY VALVE W/ STAINLESS STEEL DISC W/ WHITE BUNA-N
ULT3780001500	3" ALUMINUM BODY BUTTERFLY VALVE NODULAR IRON/17-4/BLACK BUNA-N
ULT4002062310	ALUMINUM HANDLE FOR 390 SERIES VALVE
ULT4002064610	4" - 6" VALVE ALUMINUM HANDLE KIT
ULT400206465	3" - 6" VALVE ALUMINUM HANDLE KIT
ULT400206610	6" ALUMINUM HANDLE FOR 390 SERIES VALVE
ULT4390828U501	4" ALUMINUM BODY BUTTERFLY VALVE STAINLESS STEEL DISC W/ WHITE BUNA-N
ULT4780001500	4" ALUMINUM BODY BUTTERFLY VALVE NODULAR IRON/17-4/BLACK BUNA-N
ULT5390828U501	5" ALUMINUM BODY BUTTERFLY VALVE STAINLESS STEEL DISC W/ WHITE BUNA-N
ULT5780001500	5" ALUMINUM BODY BUTTERFLY VALVE NODULAR IRON/17-4/BLACK BUNA-N
ULT5X4RX-TEE	5" X 4" ALUMINUM BODY GROOVE X GROOVE NON-ABRASIVE DROP-TEE
ULT5X4RX-UTPP	5" X 4" TEMPERED DUCTILE IRON DROP-TEE ULTRA TUFF PLAIN ENDS FOR ABRASIVE MATERIAL FULL OPENING
ULT6390828U501	6" ALUMINUM BODY BUTTERFLY VALVE STAINLESS STEEL DISC W/ WHITE BUNA-N
ULT6780001500	6" ALUMINUM BODY BUTTERFLY VALVE NODULAR IRON/17-4/BLACK BUNA-N
ULTD4002372310L	CAST IRON VALVE HANDLE FOR 2" - 3" CAST IRON VALVES
ULTD4002374610L	CAST IRON VALVE HANDLE FOR 4" CAST IRON VALVES
ULTS-ADAPT2-3	SHAFT ADAPTER FOR 2" AND 3" VALVES W/ ACTUATOR
ULTS-ADAPT4-5-6	SHAFT ADAPTER FOR 4" TO 6" VALVES W/ ACTUATOR

## Operators



Part No.	Description
EMC565949	EXTERNAL AIR CYLINDER FITS F7000 SERIES EMCO VALVE W/ MANUAL OPERATOR ARM W/ 3 BOLT BODY
BETAD14PP5ALFS	MASTER SWITCH 5 COMPARTMENT AIR DISTRIBUTOR PUSH/PULL
BETAD14TO5ALFS	AIR VALVE DISTRIBUTOR, NO MASTER SWITCH 5 COMPARTMENT - TOGGLE ONLY



# ROAD EQUIPMENT PARTS CENTER

## Discharge Valves

Pumps & Valves

Part No.	Description
EMC407804	WHITE TEFLON PACKINGS EMCO F7000 MECHANICAL VALVE REQUIRES TWO PER
EMC670560	BRASS PACKING NUT EMCO F7000 MECHANICAL VALVE ONE PER
EMC670569	PACKING NUT O-RING BLACK RUBBER FITS EMCO 670560 VALVE ONE PER
EMCF7000041	4" 90 DEGREE FLANGED MECHANICAL OPERATED ELBOW W/ FKM SEAT
EMCF7001041	4" 90 DEGREE GROOVED MECHANICAL OPERATED ELBOW W/ FKM SEAT
EMCF7010041	4" STRAIGHT MECHANICAL FLANGED W/ FKM SEAT
EMCF7011041	4" STRAIGHT GROOVED MECHANICAL FLANGED W/ FKM SEAT
EMCF7020244	4" 90 DEGREE AIR OPERATED FLANGED FKM SEAT
EMCF7021244	4" 90 DEGREE AIR OPERATED GROOVED FKM SEAT
GIRGH50000FLG	3" X 3" STAINLESS STEEL QUICK REMOVABLE BONNET W/ TTMA FLANGED VALVE
GIRGH50000NPT	3" X 3" STAINLESS STEEL QUICK REMOVABLE BONNET W/ 3" NPT VALVE
GIRGH50205	STAINLESS STEEL QUICK REMOVABLE BONNET SUB-ASSEMBLY - 16 PIECES IN KIT
GIRGH50360	STAINLESS STEEL QUICK REMOVABLE BONNET HANDWHEEL ASSEMBLY - 5 PIECES IN KIT
GIRGH50380	6" STAINLESS STEEL QUICK RELEASE BONNET CLAMP - LIFETIME WARRANTY
GIRGH50499	QUICK RELEASE BONNET SEAL - 4 PIECES IN KIT
GIRGQ85000	4" X 3" STAINLESS STEEL QUICK REMOVABLE BONNET TTMA SUMP 3" TTMA FLANGE
GIRGQ86000	4" X 3" STAINLESS STEEL EXTERNAL HYDROLIC VALVE FLANGED - END HAS INDICATOR PIN
PELV74725186AL	3" QUICK REMOVABLE BONNET HANDLE
ULT5X4SXTEE	5" X 4" ALUMINUM BODY GROOVE X GROOVE STRAIGHT SX TEE
ULT5X4SXUTPP	PLAIN X PLAIN ULTRA TUFF STRAIGHT PLAIN TEE
ULT5X4SXUTPU	PLAIN X UNIVERSAL ULTRA TUFF - STRAIGHT - TEMPERED DUCTILE IRON
ULT6X4RX-TEE	6" X 4" ALUMINUM BODY GROOVE X GROOVE FULL OPENING NON-ABRASIVE STANDARD DROP-TEE
ULT6X4RX-UTPP	6" X 4" TEMPERED DUCTILE IRON PLAIN X PLAIN FULL OPENING ULTRA TUFF FOR ABRASIVE MATERIAL DROP-TEE
ULT6X4SXTEE	6" X 4" ALUMINUM BODY GROOVE X GROOVE STRAIGHT SX TEE
ULT6X4SXUTPU	6" X 4" PLAIN X UNIVERSAL ULTRA TUFF STRAIGHT
ULT6X4UTPP	6" X 4" PLAIN X PLAIN ULTRA TUFF STRAIGHT TEE



## Discharge Valves

Part No.	Description	Material
EMC408061	O-RING SEAT F500 SERIES VALVE POPPET	FKM
EMC615992	SEAT DISC FOR F7000 VALVE POPPET	FKM
EMC619522	SEAT FITS F7000 VALVE POPPET	Buna-N
GIRGH50240	TOP HAT GASKET FOR QRB BONNET TO BODY	Teflon Envelope
GIRGM30030	DURASEAL GASKET ORANGE SWIVEL BASE	Teflon
GIRGQ86020	REPLACEMENT SEAT	Teflon
PELTT15202TF	3" MAIN SEAL .500"	Teflon/PTFE
PELTT15227NT	QUICK REMOVABLE BONNET PACKINGS SOLD AS EACH	Acrylic/PTFE



# ROAD EQUIPMENT PARTS CENTER



Pumps & Valves

## Hydraulic Fittings & Connections



Part No.	Description	Material
DIX6WF6-B	.75" W-SERIES WINGSTYLE HYDRAULIC COUPLING - FEMALE NPT	Brass
DIX8HBF8	1" H-SERIES ISO-B POPPET VALVE HYDRAULIC COUPLING - FEMALE NPT	Steel
DIX8HF8	1" H-SERIES ISO-B POPPET VALVE HYDRAULIC COUPLING - FEMALE NPT	Steel
DIX8WF8-B	1" W-SERIES WINGSTYLE HYDRAULIC COUPLING - FEMALE NPT	Brass
DIXW6F6-B	.75" W-SERIES WINGSTYLE HYDRAULIC COUPLING - FEMALE NPT	Brass
DIXW8F8-B	1" W-SERIES WINGSTYLE HYDRAULIC COUPLING - FEMALE NPT	Brass
DIX8KDP-K8DC	1" K-SERIES ISO-A INTERCHANGE DUST CAP/PLUG	Buna-N
DIXW6DC	.75" W-SERIES WINGSTYLE DUST CAP	Steel
DIXW8DC	1" W-SERIES WINGSTYLE DUST CAP	Steel

## Hydraulic Tank Breathers



Part No.	Description
TC0015	STAINLESS STEEL FILLER CAP BREATHER W/ STRAINER HYDRAULIC ONLY W/ CHAIN/6-SCREWM T KK
TFA005715	STAINLESS STEEL FILLER BREATHER ASSEMBLY W/ SCREEN WA 158127
TFA005715L	STAINLESS STEEL FILLER BREATHER ASSEMBLY W/ SCREEN LOCKING

## Hydraulic Jack Pumps



Part No.	Description
GIRGZ30000	HYDRAULIC JACK PUMP ASSEMBLY
BETHP46982ALSL	HYDRAULIC JACK PUMP ASSEMBLY

## Fusible and Frangible Plugs



Part No.	Description	Material
BETFP15003BR	.125" NPT BETTS FUSIBLE PLUG	Brass
BETFP15017BR	4" X .125" NPT BETTS FUSIBLE AND FRANGIBLE PLUG	Brass

## Controls

### Brake Interlocks



Part No.	Description	Material
DIX5000AI	3 PORT BRAKE INTERLOCK W/ 1" BUTTON	Aluminum
DIX5000AISK	3 PORT BRAKE INTERLOCK REBUILD KIT	--
EBW88011301	BRAKE INTERLOCK SCREW ADJUSTER W/ BUTTON 1.5"	Steel
EBW88014401	BRAKE INTERLOCK SCREW ADJUSTER W/ BUTTON 1"	Steel
EBW88015001	3 PORT INTERLOCK VALVE - STANDARD PLUNGER	Aluminum
EBW88015002	3 PORT INTERLOCK VALVE - ROLLER END	Aluminum
EBW88025601	6 PORT INTERLOCK VALVE - STANDARD PLUNGER	Aluminum
EBW900012	SERVICE KIT FOR 3 PORT INTERLOCK	Aluminum



# ROAD EQUIPMENT PARTS CENTER

## Pressure Relief Vents

### Pressure Relief Vents — Stainless Steel

Part No.	Size	MAWP
BETRV4NT-30	4.000"	30
BETRV4NT-35	4.000"	35
GIRGA00010-25	4.000"	25
GIRGA00010-30	4.000"	30
GIRGA00100-25	3.000"	25
GIRGA00100-30	3.000"	30



### Pressure Vacuum Relief Vents — Stainless Steel

Part No.	Size	MAWP
GIRGA00300-25	3.000"	25
GIRGA00300-30	3.000"	30
GIRGA00400-25	4.000"	25
GIRGA00400-30	4.000"	30



Pumps & Valves

## Pressure Vacuum Relief Vents

Part No.	Description
GIRGB07000	REPLACEMENT TEFLON-SILICON O-RING SEAL
GIRGC62010	3" STAINLESS STEEL SWIVEL BASE MAGNETIC VACUUM VENT
GIRGG8000	REPLACEMENT STAINLESS STEEL VALVE SEAT W/ TEFLON-SCILICON O-RING
GIRGG81000	REPLACEMENT STAINLESS STEEL VALVE SEAT W/ TEFLON-SCILICON O-RING SEAL PRESSURE VACUUM COMBINATION



## Gauges

Part No.	Description
BKTGP16	16" GAUGE POLE INCH INCREMENTS HARDWOOD MATERIAL STORAGE TANK GAUGE
PELGP2.5100SSLFLM	STAINLESS STEEL 0-100 PSI - LIQUID FILLED - 2.5" DIAMETER GAUGE
PELGP2.560SSLFLM	STAINLESS STEEL 0-60 PSI - LIQUID FILLED - 0-60 PSI 2.5" DIAMETER GAUGE
PELGPV2.53060SSLF	STAINLESS STEEL 30HG/60PSI PRESSURE VACUUM - LIQUID FILLED - 2.5IN DIAMETER GAUGE



### Notes:

---

---

---

---

---

---

---

---

---

---

---

---

---

---

---

---

---

---

---

---

---

---

---







# ROAD EQUIPMENT PARTS CENTER

---

---

## Tank & Shell

# ROAD EQUIPMENT PARTS CENTER



## Tank — Shell — Panels



Part No.	Description
BRE-C22GALOCFORM	48" X 18' 22GA STAINLESS STEEL BRIGHT ANNEALED FINISH LOCKFORM WRAPSHEET
BRE-C22GAWRAP	48" X 22' 22GA STAINLESS STEEL BRIGHT ANNEALED FINISH WRAPSHEET
BRE-WLK-FRM4146	8" X 10' 22GA STAINLESS STEEL JACKET FLASHING
BRE-WLK-FRM4149	16GA STAINLESS STEEL END CAP JACKET FLASHING

## Brackets



Part No.	Description
BRE-FAD211	STAINLESS STEEL LANDING GEAR CRANK HANDLE BRACKET







**ROAD EQUIPMENT**  
**PARTS CENTER**

---

# Upper Couplers

# ROAD EQUIPMENT PARTS CENTER



## Standard — 5/16" Plate

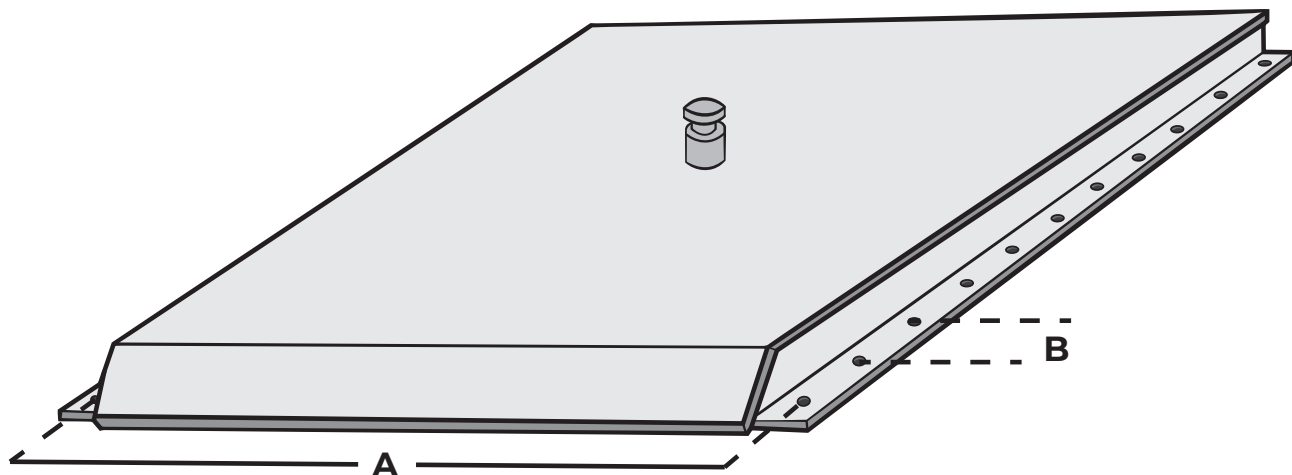
Part No.	Application	Material	A	B
DDN11077-200-SAE	WABASH	Steel	41"	4"
DDN309-40X	FRUEHAUF/LBT STYLE INSERTED	Steel	39"	3"
DDN502-18-SAE	WABASH	Steel	35"	3"
DDN507-04-SAE	WABASH	Steel	40.5"	3"
DDN507-200-SAE	MISC	Steel	41"	2"
DDN507-300-SAE	POLAR STYLE	Steel	40.625"	2"
DDN507-34-SAE	POLAR STYLE	Steel	40.5"	2"
DDN509-40-SAE	FRUEHAUF/LBT STYLE	Steel	39"	3"
DDN511-24-SAE	WABASH	Steel	42.5"	5.5"
DDN9136-0090-SAE	HEIL STYLE	Steel	40.25"	3"
DDN9136-0166	HEIL STYLE	Steel	46.25"	3"

## Heavy Duty — 3/8" Plate

Part No.	Application	Material	A	B
DDN1102-59X	Acro Style	Steel	37.25"	2"
DDN1107-03-SAE	POLAR STYLE	Steel	40.625"	2"
DDN1109-40-SAE	FRUEHAUF/LBT STYLE INSERTED	Steel	39"	3"
DDN409-40X	FRUEHAUF/LBT STYLE	Steel	39"	3"
DDN9136-0176	HEIL STYLE	Steel	46.25"	3"
DDN9136-0182-SAE	HEIL STYLE	Steel	40.25"	3"

## Revolver Replacement Parts

Part No.	Description
DDNDSR2-4	REVOLVER DISC AND RING W/ ATTACHING HARDWARE
DDNK3175B	.3125" PLATE REVOLVER REPLACEMENT - PIN ONLY
DDNK3775B	.375" PLATE REVOLVER REPLACEMENT - PIN ONLY
DDNDSR60035	REVOLVER DISC W/ WELD ON RETAINER - OLD STYLE
DDNDSR2-4	REVOLVER DISC W/ BOLT-ON RETAINER



Upper Couplers



# ROAD EQUIPMENT PARTS CENTER

**Notes:**

Lined area for notes, consisting of multiple horizontal lines.

**Upper Couplers**

# ROAD EQUIPMENT PARTS CENTER



DIX300-ALT-SS .....	6	DIX125-C-AL .....	7	EBW88041001 .....	9	EMC408061 .....	11
DIX400-ALT-SS .....	6	DIX150-C-AL .....	7	EBW88041101 .....	9	EMC615992 .....	11
DIX3020-DA-SS .....	6	DIX200-C-AL .....	7	EBW88020601 .....	9	EMC619522 .....	11
DIX4030-DA-SS .....	6	DIX250-C-AL .....	7	EMC560611 .....	9	GIRGH50240 .....	11
DIXDBV-VB200 .....	6	DIX300-C-AL .....	7	DIX125-DP-AL .....	9	GIRGM30030 .....	11
DIXDBV-VB300 .....	6	DIX400-C-AL .....	7	DIX150-DP-AL .....	9	GIRGQ86020 .....	11
DIXDBV-VB400 .....	6	DIX100-F-AL .....	7	DIX200-DP-AL .....	9	PELTT15202TF .....	11
DIXDL275 .....	6	DIX125-F-AL .....	7	DIX250-DP-AL .....	9	PELTT15227NT .....	11
DIXDL32 .....	6	DIX150-F-AL .....	7	DIX300-DP-AL .....	9	PELTSSGA201NA .....	11
DIXG200BL .....	6	DIX200-F-AL .....	7	DIX400-DP-AL .....	9	PELTSSGA301NA .....	11
DIXG200VB .....	6	DIX250-F-AL .....	7	DIX100-E-AL .....	9	PELTSSGA401NA .....	11
DIXG300BL .....	6	DIX300-F-AL .....	7	DIX125-E-AL .....	9	PELTG15266NA .....	11
DIXG300VB .....	6	DIX400-F-AL .....	7	DIX150-E-AL .....	9	PELRGA401NA .....	11
DIXG400BL .....	6	DIX600-F-AL .....	7	DIX200-E-AL .....	9	PELTTRGA201NA .....	11
DIXG400N .....	6	DIX200-DD-SS .....	8	DIX300-E-AL .....	9	PELTTRGA301NA .....	11
DIXG400VB .....	6	DIX300-DD-SS .....	8	DIX400-E-AL .....	9	PELTTRGA601NA .....	11
PELVC651S .....	6	DIX400-DD-SS .....	8	DIX200-DC-AL .....	9	PELTG15181NA .....	11
PELVCACSPGSKWN04 .....	6	DIX100-B-AL .....	8	DIX300-DC-AL .....	9	PELTG15266NA .....	11
PELVCALA04GXPW .....	6	DIX125-B-AL .....	8	DIX400-DC-AL .....	9	PELTG25507NA .....	11
DIX300-ALT-AL .....	6	DIX150-B-AL .....	8	DIX600-DC-AL .....	9	PELTG15266TFNA .....	11
DIX400-ALT-AL .....	6	DIX200-B-AL .....	8	DIX100-G-BU .....	10	PELTTRGA301TFNA .....	11
DIX600-ALT-AL .....	6	DIX100-D-AL .....	8	DIX125-G-BU .....	10	PELTTRGA301TFNAML .....	11
DIX3020-DA-AL .....	6	DIX125-D-AL .....	8	DIX150-G-BU .....	10	PELTTRGA401TFNA .....	11
DIX4030-DA-AL .....	6	DIX150-D-AL .....	8	DIX200-G-BU .....	10	PELTTRGA401TFNAML .....	11
DIX125-A-SS .....	7	DIX300-HRP-SP .....	8	DIX250-G-BU .....	10	PELTTRGA602TFNAML .....	11
DIX150-A-SS .....	7	DIX300-HRP-BR .....	8	DIX300-G-BU .....	10	PELBVS-SP-NPT-050 .....	12
DIX200-A-SS .....	7	EBW77411603 .....	8	DIX400-G-BU .....	10	PELBVS-SP-NPT-1.0 .....	12
DIX300-A-SS .....	7	DIXCVS18 .....	8	DIX500-G-BU .....	10	PELBVS-SP-NPT-125 .....	12
DIX400-A-SS .....	7	DIXCVS24 .....	8	DIX600-G-BU .....	10	PELBVS-SP-NPT-150 .....	12
DIX200-AA-SS .....	7	PELHS15X22 .....	8	DIX800-G-BU .....	10	PELBVS-SP-NPT-200 .....	12
DIX300-AA-SS .....	7	DIX250-B-AL .....	8	DIX200-G-WB .....	10	PELPP-SS-TPC-050 .....	12
DIX100-C-SS .....	7	DIX300-B-AL .....	8	DIX300-G-WB .....	10	PELPP-SS-TPC-075 .....	12
DIX125-C-SS .....	7	DIX400-B-AL .....	8	DIXVR4100FNG .....	10	PELPP-SS-TPC-100 .....	12
DIX150-C-SS .....	7	DIX200-D-AL .....	8	EBW30130001 .....	10	PELPP-SS-TPC-125 .....	12
DIX200-C-SS .....	7	DIX250-D-AL .....	8	EBW30130002 .....	10	PELPP-SS-TPC-150 .....	12
DIX250-C-SS .....	7	DIX300-D-AL .....	8	EBW30420007 .....	10	PELFL-TT-BL-AL-G15181 .....	12
DIX300-C-SS .....	7	DIX400-D-AL .....	8	GIRGU00000 .....	10	PELFL-TT-BL-AL-RGA301 .....	12
DIX400-C-SS .....	7	DIX600-D-AL .....	8	GIRGU00010 .....	10	PELFL-TT-BL-AL-RGA401 .....	12
DIX125-F-SS .....	7	DIX200-DD-AL .....	8	GIRGU02000 .....	10	PELFL-TT-BL-AL-RGA601 .....	12
DIX150-F-SS .....	7	DIX300-DD-AL .....	8	DIX200-G-BF .....	10	PELPP-SS-TE-90-038-FXF .....	12
DIX200-F-SS .....	7	DIX400-DD-AL .....	8	DIX300-G-BF .....	10	PELPP-SS-TE-90-050-FXF .....	12
DIX250-F-SS .....	7	DIX125-DP-SS .....	9	DIX400-G-BF .....	10	PELPP-SS-TE-90-075-FXF .....	12
DIX300-F-SS .....	7	DIX150-DP-SS .....	9	DIX400-G-WB .....	10	PELPP-SS-TE-90-1.0-FXF .....	12
DIX400-F-SS .....	7	DIX200-DP-SS .....	9	PELCCG100B .....	10	PELPP-SS-TE-90-1.50-FXF .....	12
DIX100-A-AL .....	7	DIX250-DP-SS .....	9	PELCCG150B .....	10	PELPP-SS-TE-90-200-FXF .....	12
DIX125-A-AL .....	7	DIX300-DP-SS .....	9	PELCCG200B .....	10	PELBVS-FP-NPT-038 .....	12
DIX150-A-AL .....	7	DIX125-E-SS .....	9	PELCCG250B .....	10	PELBVS-FP-NPT-050 .....	12
DIX200-A-AL .....	7	DIX150-E-SS .....	9	PELCCG300B .....	10	PELBVS-FP-NPT-075 .....	12
DIX250-A-AL .....	7	DIX200-E-SS .....	9	PELCCG400B .....	10	PELBVS-FP-NPT-100 .....	12
DIX300-A-AL .....	7	DIX300-E-SS .....	9	PELCCG500B .....	10	PELBVS-FP-NPT-125 .....	12
DIX400-A-AL .....	7	DIX200-DC-SS .....	9	PELCCG600B .....	10	PELBVS-FP-NPT-150 .....	12
DIX600-A-AL .....	7	DIX300-DC-SS .....	9	PELCCG125V .....	10	PELBVS-FP-NPT-200 .....	12
DIX150-AA-AL .....	7	DIX400-DC-SS .....	9	PELCCG200VGR .....	10	PELBVS-FP-NPT-300 .....	12
DIX200-AA-AL .....	7	DIX31440-225AL .....	9	PELCCG300V .....	10	CHTWE2016 .....	12
DIX300-AA-AL .....	7	DIX41440-225AL .....	9	PELTT2007.038R .....	11	CHTWE2023 .....	12
DIX400-AA-AL .....	7	DIX4540F .....	9	PELTT2019.038R9 .....	11	CHTWE2030 .....	12
DIX100-C-AL .....	7	EBW88040301 .....	9	PELTTN43156 .....	11	CHTWE2037 .....	12





# ROAD EQUIPMENT PARTS CENTER

CHTWE2051 .....	12	EBW41011601 .....	14	DIXG3050 .....	25	BRE-WLKMWYA308302 .....	38
CHTWE2058 .....	12	EBW41012901 .....	14	DIXTDF6 .....	25	BRE-SAF-390ELX300 .....	38
EMCZ0009-001 .....	13	EBW46510102 .....	14	DIXTDF7 .....	25	HILT-20299 .....	38
DIXTTF3AL .....	13	JIKJDG-105 .....	14	DIXTDF8 .....	25	HILT-21642 .....	38
DIXTTF4AL .....	13	JIKJDG-1053B .....	14	PELHTD-AL10 .....	25	PELV333PBN10 .....	38
FA038 .....	13	EMC619499 .....	14	PELHTD-AL6 .....	25	RUN600-0 .....	38
FA050 .....	13	BRE-FEN0000761 .....	18	PELHTD-AL7 .....	25	RUN600-1 .....	38
FA075 .....	13	NLNNF139ARU-1 .....	18	PELHTDAL8 .....	25	RUN600-2 .....	38
FA100 .....	13	NLNNF96SSRU-1 .....	18	PELHTDD-AL8 .....	25	RUN600-3 .....	38
FA125 .....	13	BRE-FEN0000766 .....	18	PELHTDD-AL8-LP .....	25	PELGP7500L0625PC .....	38
FA150 .....	13	NLNNF96ARU-1 .....	18	PELHTDLK8 .....	25	BET3119BN .....	38
FA200 .....	13	NLNNF99SS-1 .....	18	KRS10X21X.051 .....	25	PELMDHG1123583W .....	38
GIRGJ30000 .....	13	NLNNF139A-1 .....	18	KRS6X21X.058 .....	25	PELMDHG3395 .....	38
GIRGJ36000 .....	13	NLNNF99A-1 .....	18	KRS7X21X.060 .....	25	PELMDHG3513EPDM .....	38
GIRGJ40000 .....	13	NLNNF139SS-1 .....	18	KRS8X21X.051 .....	25	PELMDHG3513SA .....	38
GIRGK30000 .....	13	NLNNF139SSRU-1 .....	19	KRSIT6 .....	25	PELMDHG3513WH .....	38
PELPPSSSTPN200600 .....	13	NLNNFN21180SSMKHD .....	19	KRSIT7 .....	25	PELMDHG3523 .....	38
PELPPSSSTPN300600 .....	13	BRE-A-BR-A-2443 .....	19	PELHTEC-AL10 .....	25	PELMDHG3560BN .....	38
CHTFE0053 .....	13	NLNNF166SS-1 .....	19	PELHTEC-AL6 .....	25	PELMDHG4383WN .....	38
CHTFE0067 .....	13	BRE-R-PT-A-5110 .....	19	PELHTEC-AL7 .....	25	PELMDHG9209WB .....	38
CHTFJ0035 .....	13	BRE-FEN0001024 .....	19	PELHTECAL8 .....	25	PELMDHGMWY0049BN .....	38
CHTFJ0049 .....	13	NLNNF180SSNR-1 .....	19	DIXF1 .....	26	PELMDHGMWY0049WB .....	38
CHTIK0078 .....	13	BRE-WLKEXT0070650 .....	19	GIRGT60002 .....	26	PELMDHGTKA8586 .....	38
CHTIK0079 .....	13	BRE-FEN0001026 .....	19	DIXK10 .....	26	PELMDHGVKA5927 .....	38
CHTZZ0660 .....	13	BRE-MDF0000015 .....	20	DIXK12 .....	26	BET18933ALVT .....	39
CHTIK0087 .....	13	BRE-WLK-BPR0112 .....	20	DIXK16 .....	26	BET6496ALB .....	39
CHTZZ7000 .....	13	BRE-WLK-MDF0023 .....	20	DIXK20 .....	26	BET8008BXB .....	39
PELPPSSWN038NPT .....	13	BRE-P-A-5877 .....	20	DIXKS10 .....	26	BETPPVL716BXB .....	39
PELPPSSWN050NPT .....	13	BRE-WLK-FEN0025 .....	20	DIXKS12 .....	26	BETPPVL720BXB .....	39
PELPPSSWN075NPT .....	13	BRE-WLK-MDF3239 .....	20	DIXKS16 .....	26	BETPPVL816BXB .....	39
PELPPSSWN100NPT .....	13	BRE-WLK-BPR0111 .....	20	DIXKS20 .....	26	BETPPVL820BXB .....	39
PELPPSSWN125NPT .....	13	BRE-WLK-FENA3054 .....	20	BRE-FAD101 .....	30	DIXWD301ALVB .....	42
PELPPSSWN150NPT .....	13	KANBANDCOIL-2 .....	24	BRE-ALB2899 .....	30	DIXWD306ALVB .....	42
PELPPSSWN200NPT .....	13	KANBANDCOIL-3 .....	24	BRE-LA2802 .....	30	DIXWD401ALVB .....	42
PELPPSSWN300NPT .....	13	KANBANDCOIL-4 .....	24	BRE-WLK-EXT70840C .....	30	DIXWD406ALVB .....	42
PELPPSSSTCN038 .....	13	KURBCRT2 .....	24	BRE-ALC4175 .....	30	DIXWD601ALV .....	42
PELPPSSSTCN050 .....	13	KURBCRT3 .....	24	BRE-LAD0000982 .....	30	DIXWD606ALV .....	42
PELPPSSSTCN075 .....	13	KURBCRT4 .....	24	BRE-WLK-LAD4115 .....	30	PELVCAL04GXGW .....	42
PELPPSSSTCN100 .....	13	KURBCYL2 .....	24	BRE-LAD0000844 .....	30	PELVCALA04DBWNGXG .....	42
PELPPSSSTCN150 .....	13	KURMILK-LT200X100 .....	24	BRE-WLK-LAD4229 .....	30	ULT02399722F65000 .....	42
PELPPSSSTCN200 .....	13	KURMILK-LT200X100 .....	24	BRE-WLK-LAD4235 .....	31	ULT03399722F65000 .....	42
PELPPSSSTCN300 .....	13	KURMILK-LT250X100 .....	24	BRE-WLK-LAD42488 .....	31	ULT04399722F65000 .....	42
DIXAM7 .....	14	KURMILK-LT300X100 .....	24	BRE-BTI-LIGHTBOXR .....	34	ULT100086 .....	42
DIXAM8 .....	14	KANST120LT-2 .....	24	BRE-PLR-KM0565 .....	34	ULT100096 .....	42
DIXGAMO .....	14	KANST120LT-3 .....	24	BRE-WLK-4113A .....	34	ULT10086T .....	42
PELQCSSFE075 .....	14	KANST120LT-4 .....	24	BRE-CHA839 .....	34	ULT300206465W .....	42
PELQCSSME075 .....	14	KANST120UAPDH-4 .....	24	BRE-SD27011L .....	34	ULT3390828U501 .....	42
PELQCSSBE00 .....	14	KURNDH404X100 .....	24	NLNNL306SSNL-1RH .....	34	ULT3780001500 .....	42
PELQCGSKVIT .....	14	KURTDH303X100 .....	24	BRE-PLR-KM0564 .....	34	ULT4002062310 .....	42
PELQCGSKBR .....	14	KURTDH404X100 .....	24	BRE-SD27011R .....	34	ULT4002064610 .....	42
SCU05066 .....	14	KANBANDSLEEVE-3 .....	24	NLNNL306SSNL-1LH .....	34	ULT400206465 .....	42
SCU05072 .....	14	KANBANDSLEEVE-4 .....	24	BRE-BR-A-7032 .....	35	ULT400206610 .....	42
SCU05815 .....	14	KURSLV-DRP4X3 .....	24	BRE-WLK-LBX0031 .....	35	ULT4390828U501 .....	42
SCU05816 .....	14	KURTV202X100 .....	25	BRE-BR-B-6783L .....	35	ULT4780001500 .....	42
EBW41030003 .....	14	KANST120UACVR-2 .....	25	BRE-WLK-LBX0056 .....	35	ULT5390828U501 .....	42
EBW41040103 .....	14	KANST120UACVR-3 .....	25	BRE-BR-B-6783R .....	35	ULT5780001500 .....	42
EBW41013301 .....	14	KANST120VP-2 .....	25	BRE-WLK-MWY0094 .....	38	ULT5X4RX-TEE .....	42

Index

# ROAD EQUIPMENT PARTS CENTER



ULT5X4RX-UTPP.....	42	BETHP46982ALSL.....	44
ULT6390828U501.....	42	BETFP15003BR.....	44
ULT6780001500.....	42	BETFP15017BR.....	44
ULTD4002372310L.....	42	DIX5000AI.....	44
ULTD4002374610L.....	42	DIX5000AISK.....	44
ULTS-ADAPT2-3.....	42	EBW88011301.....	44
ULTS-ADAPT4-5-6.....	42	EBW88014401.....	44
EMC565949.....	42	EBW88015001.....	44
BETAD14PP5ALFS.....	42	EBW88015002.....	44
BETAD14TO5ALFS.....	42	EBW88025601.....	44
EMC407804.....	43	EBW900012.....	44
EMC670560.....	43	BETRVP4NT-30.....	45
EMC670569.....	43	BETRVP4NT-35.....	45
EMCF7000041.....	43	GIRGA00010-25.....	45
EMCF7001041.....	43	GIRGA00010-30.....	45
EMCF7010041.....	43	GIRGA00100-25.....	45
EMCF7011041.....	43	GIRGA00100-30.....	45
EMCF7020244.....	43	GIRGB07000.....	45
EMCF7021244.....	43	GIRGC62010.....	45
GIRGH50000FLG.....	43	GIRGG8000.....	45
GIRGH50000NPT.....	43	GIRGG81000.....	45
GIRGH50205.....	43	BKTGP16.....	45
GIRGH50360.....	43	PELGP2.5100SSLFLM.....	45
GIRGH50380.....	43	PELGP2.560SSLFLM.....	45
GIRGH50499.....	43	PELGPV2.53060SSLF.....	45
GIRGQ85000.....	43	GIRGA00300-25.....	45
GIRGQ86000.....	43	GIRGA00300-30.....	45
PELV74725186AL.....	43	GIRGA00400-25.....	45
ULT5X4SXTEE.....	43	GIRGA00400-30.....	45
ULT5X4SXUTPP.....	43	BRE-C22GALOCFORM.....	48
ULT5X4SXUTPU.....	43	BRE-C22GAWRAP.....	48
ULT6X4RX-TEE.....	43	BRE-WLK-FRM4146.....	48
ULT6X4RX-UTPP.....	43	BRE-WLK-FRM4149.....	48
ULT6X4SXTEE.....	43	BRE-FAD211.....	48
ULT6X4SXUTPU.....	43	DDN11077-200-SAE.....	52
ULT6X4UTPP.....	43	DDN309-40X.....	52
EMC408061.....	43	DDN502-18-SAE.....	52
EMC615992.....	43	DDN507-04-SAE.....	52
EMC619522.....	43	DDN507-200-SAE.....	52
GIRGH50240.....	43	DDN507-300-SAE.....	52
GIRGM30030.....	43	DDN507-34-SAE.....	52
GIRGQ86020.....	43	DDN509-40-SAE.....	52
PELTT15202TF.....	43	DDN511-24-SAE.....	52
PELTT15227NT.....	43	DDN9136-0090-SAE.....	52
DIX6WF6-B.....	44	DDN9136-0166.....	52
DIX8HBF8.....	44	DDN1102-59X.....	52
DIX8HF8.....	44	DDN1107-03-SAE.....	52
DIX8WF8-B.....	44	DDN1109-40-SAE.....	52
DIXW6F6-B.....	44	DDN409-40X.....	52
DIXW8F8-B.....	44	DDN9136-0176.....	52
DIX8KDP-K8DC.....	44	DDN9136-0182-SAE.....	52
DIXW6DC.....	44	DDNDSR2-4.....	52
DIXW8DC.....	44	DDNK3175B.....	52
TC0015.....	44	DDNK3775B.....	52
TFA005715.....	44	DDNDSR60035.....	52
TFA005715L.....	44	DDNDSR2-4.....	52
GIRGZ30000.....	44		



# ROAD EQUIPMENT PARTS CENTER



**Notes:**

Notes

Lined area for notes.



# ROAD EQUIPMENT PARTS CENTER

**Notes:**

Multiple horizontal lines for writing notes.

Notes

**ROAD EQUIPMENT  
PARTS CENTER**



**Notes:**

**Notes**

Lined area for taking notes, consisting of approximately 30 horizontal lines.



# ROAD EQUIPMENT PARTS CENTER

**Notes:**

Lined area for taking notes, consisting of 25 horizontal lines.

**Notes**







# ROAD EQUIPMENT PARTS CENTER



Notes:

A series of horizontal lines providing a space for handwritten notes.

Notes





# ROAD EQUIPMENT PARTS CENTER



APPLETON, WI  
800-688-8007

ATLANTA, GA  
800-748.7911

BLK RIVER FALLS, WI  
800-688-8002

CADILLAC, MI  
800-968-9563

CHICAGO, IL  
800-968-9777

DALLAS, TX  
800-772-5362

GARY, IN  
800-727-8731

GRAND RAPIDS, MI  
800-968-4781

KALAMAZOO, MI  
800-748-0580

LANSING, MI  
800-968-7510

MINNEAPOLIS, MN  
800-688-3154

MILWAUKEE, WI  
800-688-8006

ONTARIO, CA  
909-230-4141

OAKLAND, CA  
800-771-5536

PHILADELPHIA, PA  
800-523-6668

SOUTH BEND, MI  
800-968-5235